

## SPEC SHEET + MEASUREMENTS



### A4 Cooling Performance Short Sleeve Tee. A4N3142

#### Product photo



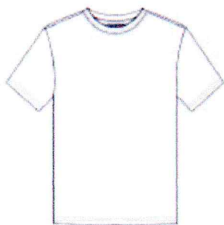
A top choice for sports and exercise, this tee combines a comfortable fit with performance features such as moisture wicking and sun protection.

- 4-ounce, 100% recycled poly interlock
- Moisture-wicking
- Stain release
- Odor-resistant
- Snag-resistant
- UPF rating of 44+
- Reinforced shoulder seams for durability
- Double-needle coverstitching on hem
- Tag-free label

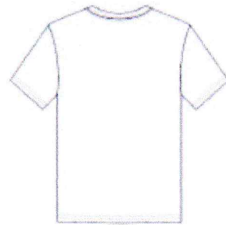
#### **CARE INSTRUCTIONS**

Machine Wash Cold. Do Not Bleach. Do Not Use Fabric Softeners. Tumble Dry Low. Do Not Iron.

#### Sketches



front



back

# SPEC SHEET + MEASUREMENTS



## A4 Cooling Performance Short Sleeve Tee. A4N3142

### PRODUCT MEASUREMENTS

|                      | XS     | S      | M      | L      | XL     | 2XL    | 3XL    | 4XL    |
|----------------------|--------|--------|--------|--------|--------|--------|--------|--------|
| Body Length at Back  | 26 1/2 | 27 1/2 | 28 1/2 | 29 1/2 | 30 1/2 | 31 1/2 | 32 1/2 | 33 1/2 |
| Chest                | 19 1/2 | 20 1/2 | 21 1/2 | 23     | 24 1/2 | 26     | 27 1/2 | 29     |
| Set in Sleeve Length | 9 1/4  | 9 1/2  | 9 3/4  | 10 1/4 | 10 3/4 | 11 1/4 | 11 3/4 | 12 1/4 |

**Body Length at Back:** Measured from high point shoulder to finished hem at back.

**Chest:** Measured across the chest one inch below armhole when laid flat.

**Set in Sleeve Length:** Measure from Center Back neck to shoulder point to sleeve hem.

### SIZE CHARTS

|       | XS    | S     | M     | L     | XL    | 2XL   | 3XL   | 4XL   |
|-------|-------|-------|-------|-------|-------|-------|-------|-------|
| Chest | 37-38 | 39-40 | 41-42 | 43-45 | 46-48 | 49-51 | 52-54 | 55-57 |

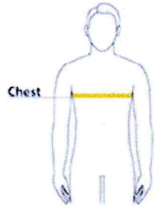
# SPEC SHEET + MEASUREMENTS



A4 Cooling Performance Short Sleeve Tee. A4N3142

## HOW TO MEASURE

---



### CHEST

Measure under the arm and around the fullest part of the chest with arms down, keeping tape horizontal.